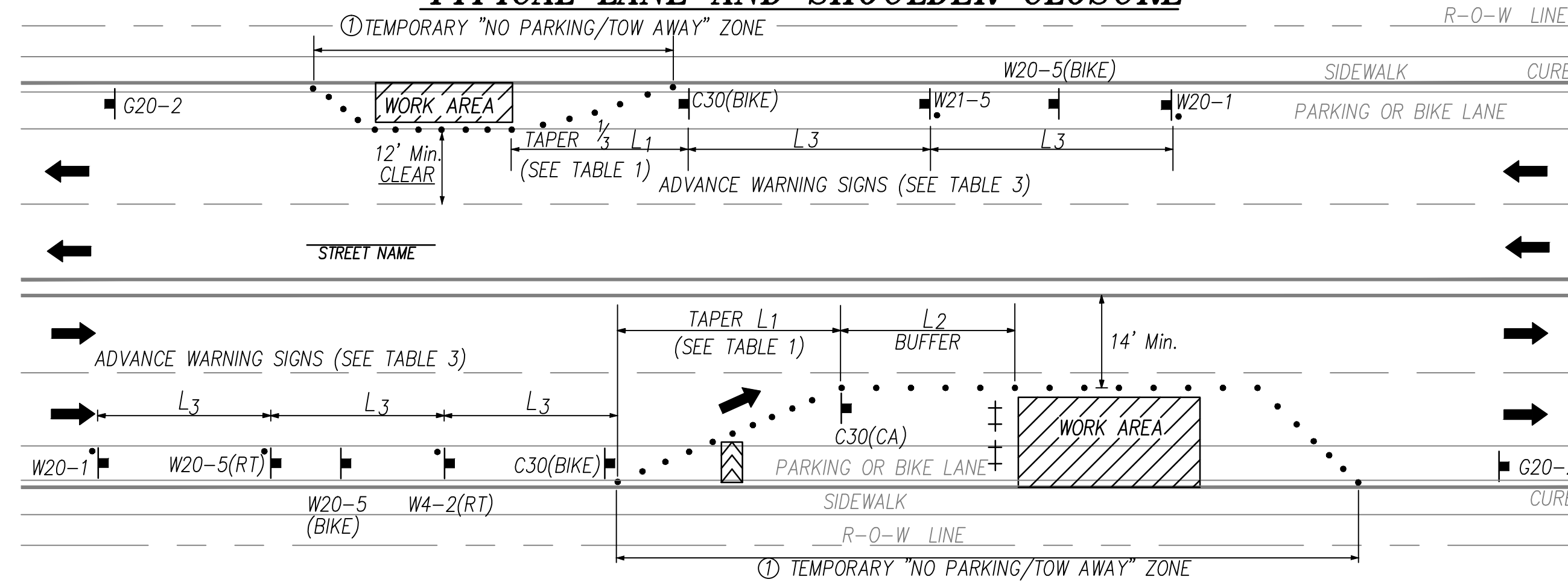


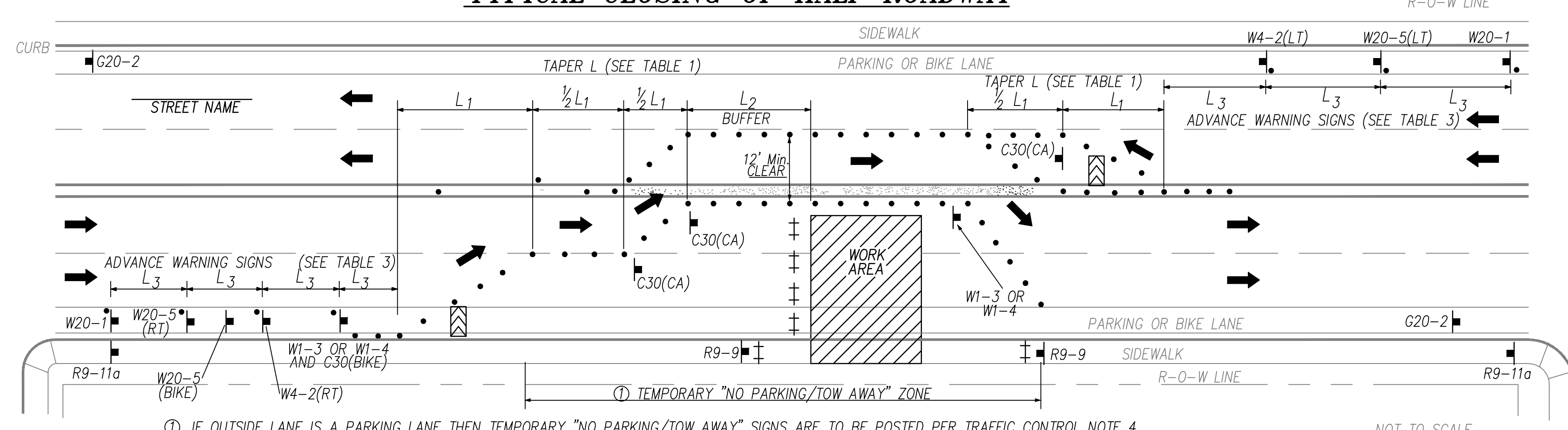
TYPICAL LANE AND SHOULDER CLOSURE



NOT TO SCALE

① IF OUTSIDE LANE IS A PARKING LANE THEN TEMPORARY "NO PARKING/TOW AWAY" SIGNS ARE TO BE POSTED PER TRAFFIC CONTROL NOTE 4.

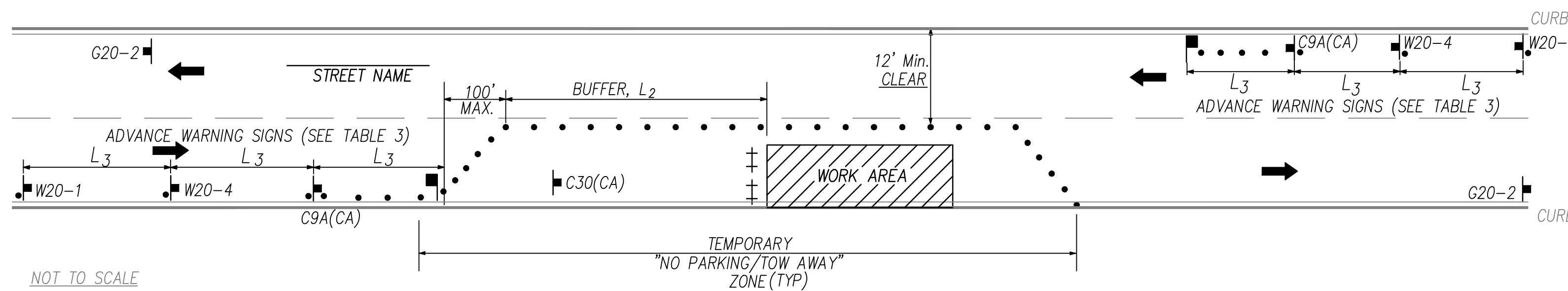
TYPICAL CLOSING OF HALF ROADWAY



NOT TO SCALE

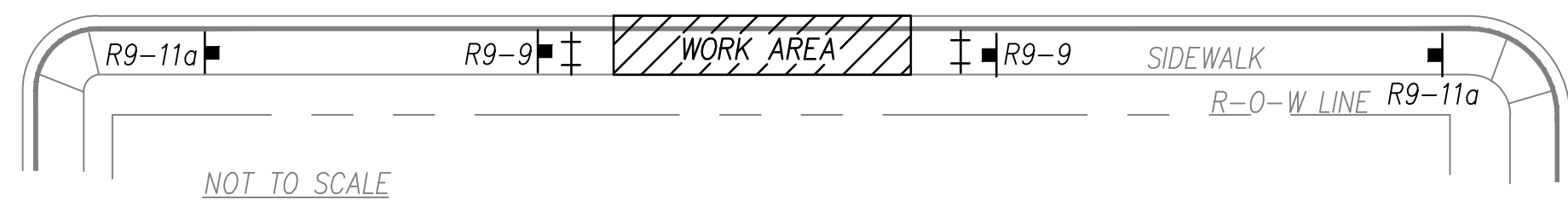
① IF OUTSIDE LANE IS A PARKING LANE THEN TEMPORARY "NO PARKING/TOW AWAY" SIGNS ARE TO BE POSTED PER TRAFFIC CONTROL NOTE 4.

TYPICAL LANE CLOSURE WITH REVERSIBLE CONTROL



NOT TO SCALE

TYPICAL SIDEWALK CLOSURE



NOT TO SCALE

TRAFFIC CONTROL NOTES

- WORK HOURS TO BE RESTRICTED TO _____ TO _____ UNLESS APPROVED OTHERWISE.
- PEDESTRIAN CONTROLS WILL BE PROVIDED AS SHOWN.
- PEDESTRIANS SHALL BE PROTECTED FROM ENTERING THE EXCAVATION BY PHYSICAL BARRIERS DESIGNED, INSTALLED, AND MAINTAINED TO THE SATISFACTION OF THE CITY ENGINEER.
- TEMPORARY "NO PARKING/TOW AWAY" SIGNS STATING THE DATE AND TIME OF PROHIBITION WILL BE POSTED 72 HOURS PRIOR TO COMMENCING WORK. CALL CARLSBAD POLICE DISPATCH AT (760)931-2197 TO VALIDATE POSTING.
- ACCESS WILL BE MAINTAINED TO ALL DRIVEWAYS UNLESS OTHER ARRANGEMENTS ARE MADE.
- TRENCHES MUST BE BACKFILLED OR PLATED DURING NON-WORKING HOURS UNLESS K-RAIL BARRIERS ARE PROVIDED. K-RAIL IS APPROVED ONLY WHEN SPECIFICALLY SHOWN ON THE APPROVED TRAFFIC CONTROL PLAN. PLATES SHALL HAVE CLEATS AND COLD MIX AT THE EDGES AS APPROVED BY THE CITY INSPECTOR.
- STRIPING WILL BE REPLACED BY THE CONTRACTOR WITHIN 24 HOURS, IF REMOVED OR DAMAGED.
- WORK THAT DISTURBS NORMAL TRAFFIC SIGNAL TIMING OPERATIONS SHALL BE COORDINATED WITH THE CITY OF CARLSBAD. CONTACT STREETS DIVISION AT (760) 434-2937 72 HOURS PRIOR TO COMMENCING WORK.
- TRAFFIC SIGNALS SHALL REMAIN FULLY ACTUATED AT ALL TIMES, UNLESS OTHERWISE APPROVED BY THE CITY ENGINEER OR HIS REPRESENTATIVE. IF TRAFFIC SIGNAL LOOP DETECTORS ARE RENDERED INOPERATIVE BY THE PROPOSED WORK, VIDEO DETECTION SHALL BE USED TO PROVIDE ACTUATION.
- FLAGGERS SHALL BE EQUIPPED WITH A WHITE HARD HAT, AN ORANGE VEST, AND A "STOP/SLOW" PADDLE ON A 5 FOOT STAFF.
- ALL TRAFFIC CONTROL DEVICES MUST BE MAINTAINED 24 HOURS A DAY, 7 DAYS PER WEEK, BY THE CONTRACTOR.
- ALL TRAFFIC CONTROL SHALL BE IN ACCORDANCE WITH THE CALIFORNIA MANUAL ON UNIFORM TRAFFIC CONTROL DEVICES (LATEST VERSION).
- TRAFFIC CONTROL PLAN SUBMITTALS ARE REQUIRED FOR EACH PHASE OF THE WORK IN THE DETAIL, FORMAT, AND QUALITY ILLUSTRATED ON THIS SHEET.
- ALL TRAFFIC CONTROL DEVICES SHALL BE REMOVED FROM VIEW OR COVERED WHEN NOT IN USE.
- THE CITY ENGINEER OR HIS REPRESENTATIVE HAS THE AUTHORITY TO INITIATE FIELD CHANGES TO INSURE PUBLIC SAFETY.
- ALL WORK AFFECTING BUS STOPS SHALL BE COORDINATED WITH NORTH COUNTY TRANSIT DISTRICT. CONTRACTOR SHALL CALL NCTD AT (760) 967-2828 AT LEAST 72 HOURS IN ADVANCE OF STARTING WORK.
- CHANGEABLE MESSAGE SIGNS SHALL BE USED IN ADVANCE OF TRAFFIC CONTROL ON MAJOR AND PRIME ARTERIALS, UNLESS OTHERWISE APPROVED. THESE SIGNS SHALL BE SHOWN ON THE TRAFFIC CONTROL PLAN.

SIGNAGE NOTES

- AT LEAST ONE PERSON SHALL BE ASSIGNED TO FULL TIME MAINTENANCE OF TRAFFIC CONTROL DEVICES ON ALL NIGHT LANE CLOSURES.
- ALL WARNING SIGNS FOR NIGHT LANE CLOSURES SHALL BE ILLUMINATED OR REFLECTORIZED AS SPECIFIED IN THE SPECIFICATIONS.
- ALL ADVANCE WARNING SIGN INSTALLATIONS SHALL BE EQUIPPED WITH FLAGS FOR DAYTIME CLOSURES OF ALL MAJOR AND PRIME ARTERIALS. FLASHING BEACONS SHALL BE USED DURING NIGHT LANE CLOSURES.
- A G20-2 "END ROAD WORK" SIGN SHALL BE PLACED AT THE END OF THE LANE CLOSURE UNLESS THE END OF THE WORK AREA IS OBVIOUS, OR ENDS WITHIN A LARGER PROJECT LIMITS.
- ALL CONES USED FOR NIGHT LANE CLOSURES SHALL BE ILLUMINATED TRAFFIC CONES OR FITTED WITH 13" REFLECTIVE SLEEVES.
- FLASHING ARROW SIGNS SHALL BE USED PER THE CALIFORNIA MUTCD. SILENT TYPE SHALL BE USED IN RESIDENTIAL AREAS.
- THE MAXIMUM SPACING BETWEEN CONES IN A TAPER OR A TANGENT SHALL BE APPROXIMATELY AS SHOWN IN TABLE 1.
- ADDITIONAL ADVANCE FLAGGERS SHALL BE REQUIRED WHEN TRAFFIC QUEUES DEVELOP. FLAGGER STATIONS FOR WORK AT NIGHT SHALL BE ILLUMINATED AS NOTED IN SECTION 66.20 OF THE MUTCD.
- PLACE C30 (CA) "LANE CLOSED" SIGN AT 500'-1000' INTERVALS THROUGHOUT EXTENDED WORK AREAS.
- ALL REQUIRED SIGNS THAT ARE TO BE LEFT IN PLACE OVER A WEEKEND OR HOLIDAY SHALL BE POST MOUNTED.
- CONSTRUCTION AREA TRAFFIC CONTROL DEVICES SHALL MEET THE PROVISIONS OF SECTION 12 OF THE MOST RECENT EDITION OF THE CALTRANS STANDARD SPECIFICATIONS.

SIGNS

	W20-2		W1-3(LT)
	W20-5(RT)		W13-1
	W20-5(LT)		G20-2
	W20-5(BIKE)		R9-9
	W20-1		R9-11a
	W20-4		R9-10
	W21-5		R4-7a
	W3-4		C9A(CA)
	W4-2(RT)		C30(CA)
	W1-4(LT)		C30A(CA)
	W1-4(RT)		C30(BIKE)

TABLE 3: SIGN SPACING, L₃

APPROACH SPEED (M.P.H.)	MINIMUM DISTANCE IN FEET L ₃	
	BETWEEN SIGNS*	FROM LAST SIGN TO TAPER
LESS THAN 25	100'	100'
25 TO 40	350'	350'
GREATER THAN 40	500'	500'

* EXACT SPACING MAY VARY DUE TO FIELD CONDITIONS

TABLE 1: TAPER LENGTHS, L₁

APPROACH SPEED (M.P.H.)	MINIMUM TAPER LENGTH L ₁ *	MINIMUM NUMBER OF CONES FOR TAPER*	MAXIMUM SPACING OF CONES ALONG TAPER (FEET) ±	MAXIMUM SPACING OF CONES ALONG TANGENT (FEET) ±
25	125	6	25	50
30	180	7	30	60
35	245	8	35	70
40	320	9	40	80
45	540	13	45	90
50	600	13	50	100
55	660	13	55	110
60	720	13	60	120

* BASED ON 12 FOOT WIDE LANE. THIS COLUMN IS ALSO APPROPRIATE FOR LANE WIDTHS LESS THAN 12 FEET.

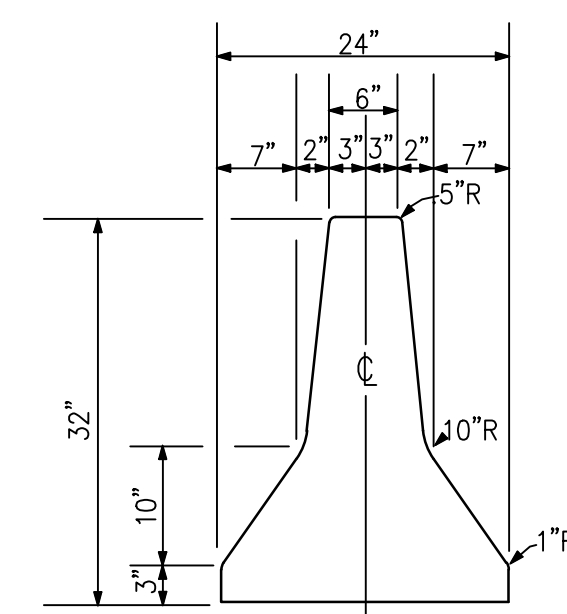
TABLE 2: BUFFER SPACE, L₂

APPROACH SPEED (M.P.H.)	LONGITUDINAL BUFFER SPACE L ₂ (FEET) ±*
25	155
30	200
35	250
40	305
45	360
50	425
55	495
60	570

* SEE MUTCD TABLE 6E-101 FOR SUSTAINED DOWNGRADES STEEPER THAN 3% AND LONGER THAN 1 MILE.

LEGEND

- DIRECTION OF TRAVEL
- PORTABLE SIGN
- TRAFFIC CONE/DELINEATOR
- TRAFFIC BARREL
- TYPE II BARRICADE
- FLAGGER
- FLAG TREE
- FLASHING ARROW SIGN
- PORTABLE FLASHING BEACON (SEE SIGNAGE NOTE #3)
- K-RAIL (TYPE 50 CONCRETE BARRIER)
- CHANGEABLE MESSAGE SIGN



ENGINEERS SEAL

CITY OF CARLSBAD APPROVED

DRAWN BY: _____ DATE: _____ RCE: _____ EXP: _____

SHEET CITY OF CARLSBAD SHEETS ENGINEERING DEPARTMENT

APPROVED _____ DATE _____

DWN BY: _____ PROJECT NO. _____ EXPIRES _____ DATE _____

CHKD BY: _____ RVWD BY: _____ DRAWING NO. _____