



Village H South Wildlife Monitoring Summary

City of Carlsbad HMP Annual Meeting

54°F 02/14/2021 06:22PM CAMERA21

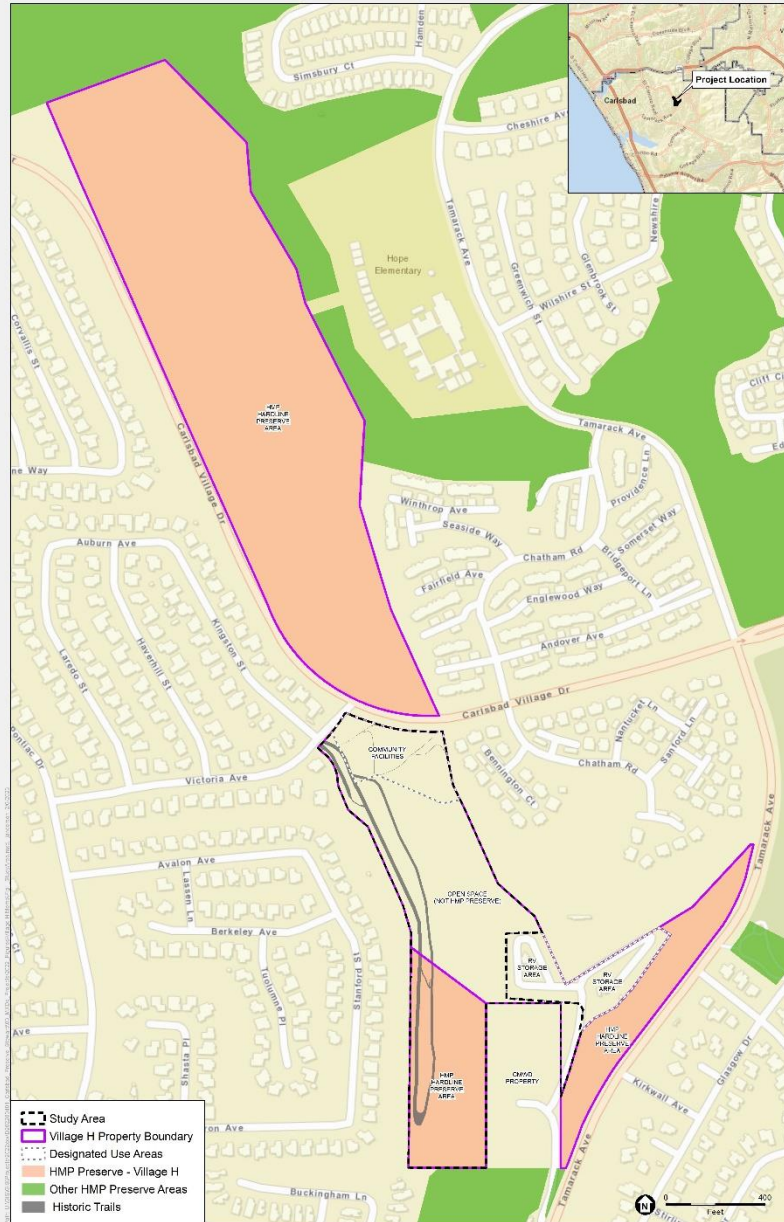
March 2, 2023

Adrienne Lee

Preserve Steward

Environmental Science Associates

alee@esassoc.com



SOURCE: ESRI

City of Carlsbad Village H Wildlife Movement Study Summary

Figure 1
Study Area Location

Village H and local wildlife movement

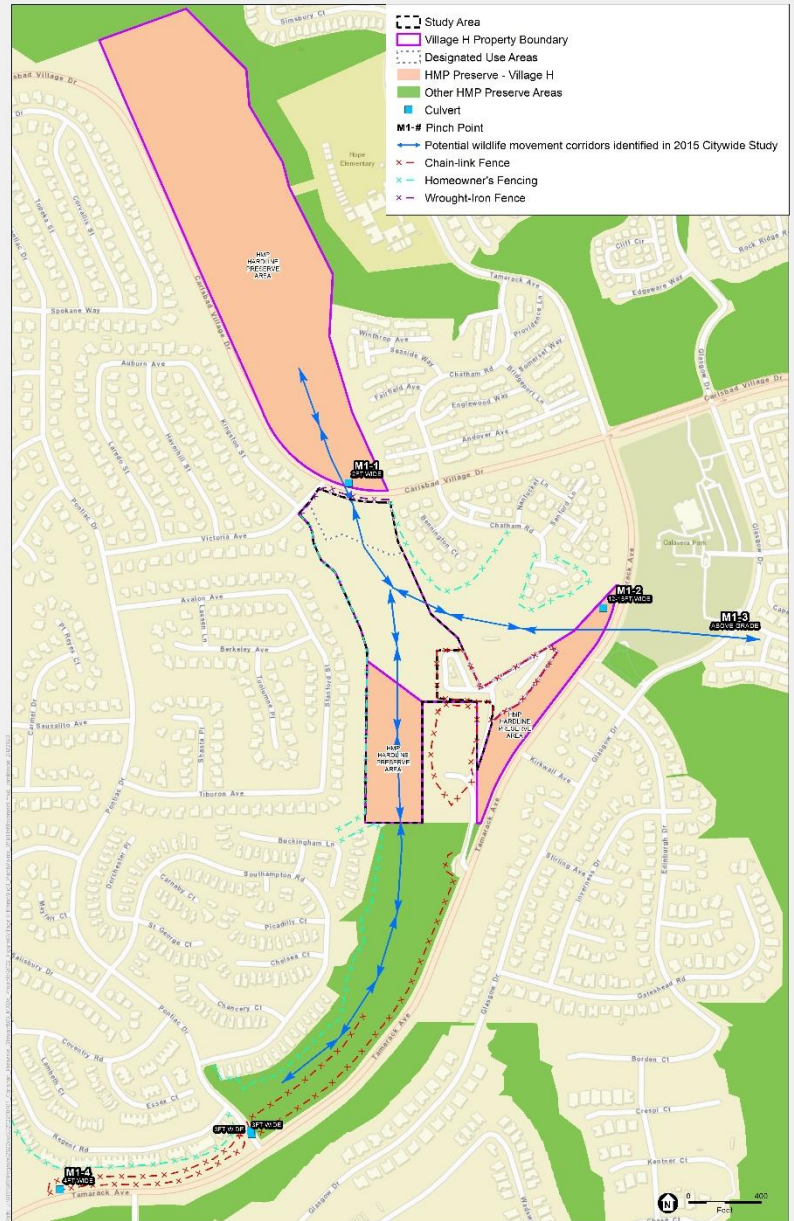


SOURCE: ESRI; City of Carlsbad, Environmental Science Associates and Center for Natural Lands Management. 2015.

City of Carlsbad Village H Wildlife Movement Study Summary

Figure 2
Carlsbad HMP Linkages





SOURCE: ES&I; City of Carlsbad, Environmental Science Associates and Center for Natural Lands Management; 2016.

City of Carlsbad Village H Wildlife Movement Study Summary

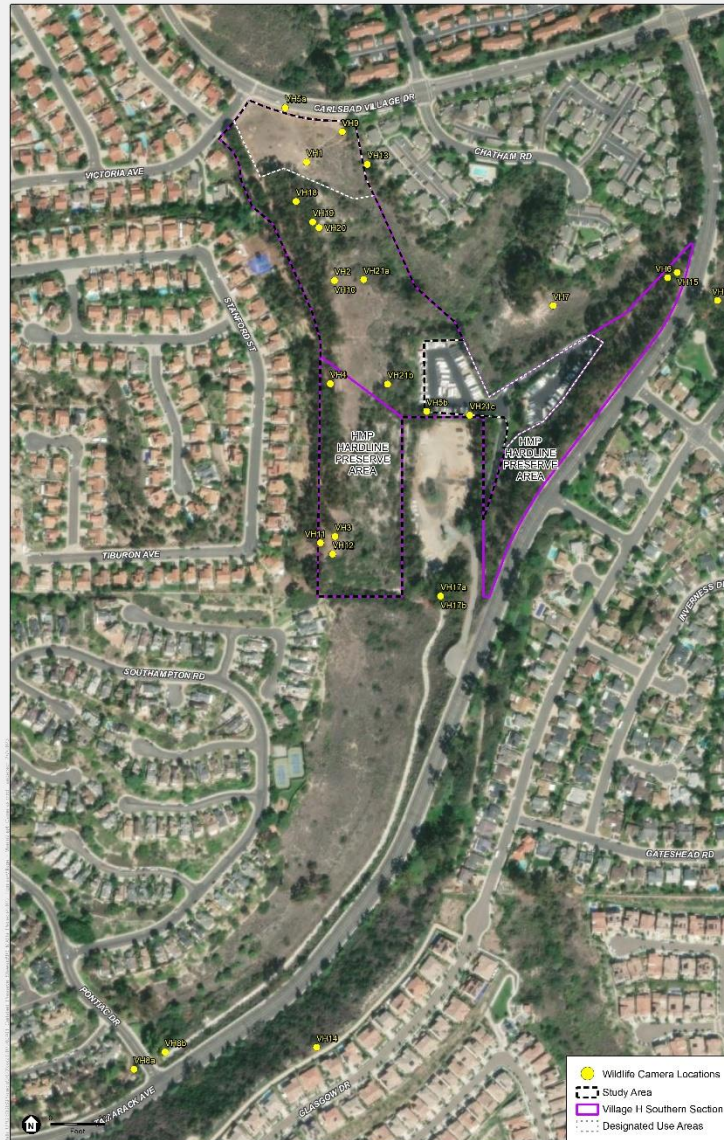
Figure 3
Pinchpoints and Potential Wildlife Movement Corridors

Wildlife movement monitoring studies

- Remote wildlife cameras
- Roadkill monitoring
- Dog waste study



Remote wildlife cameras



SOURCE: ESRI

City of Caribbad Village H Wildlife Movement Study Summary

Figure 4
Remote Wildlife Camera Locations













801.RCP. FSRI. City of Carlsbad. Environmental Sciences Associates and Center for Natural Lands Management. 2015

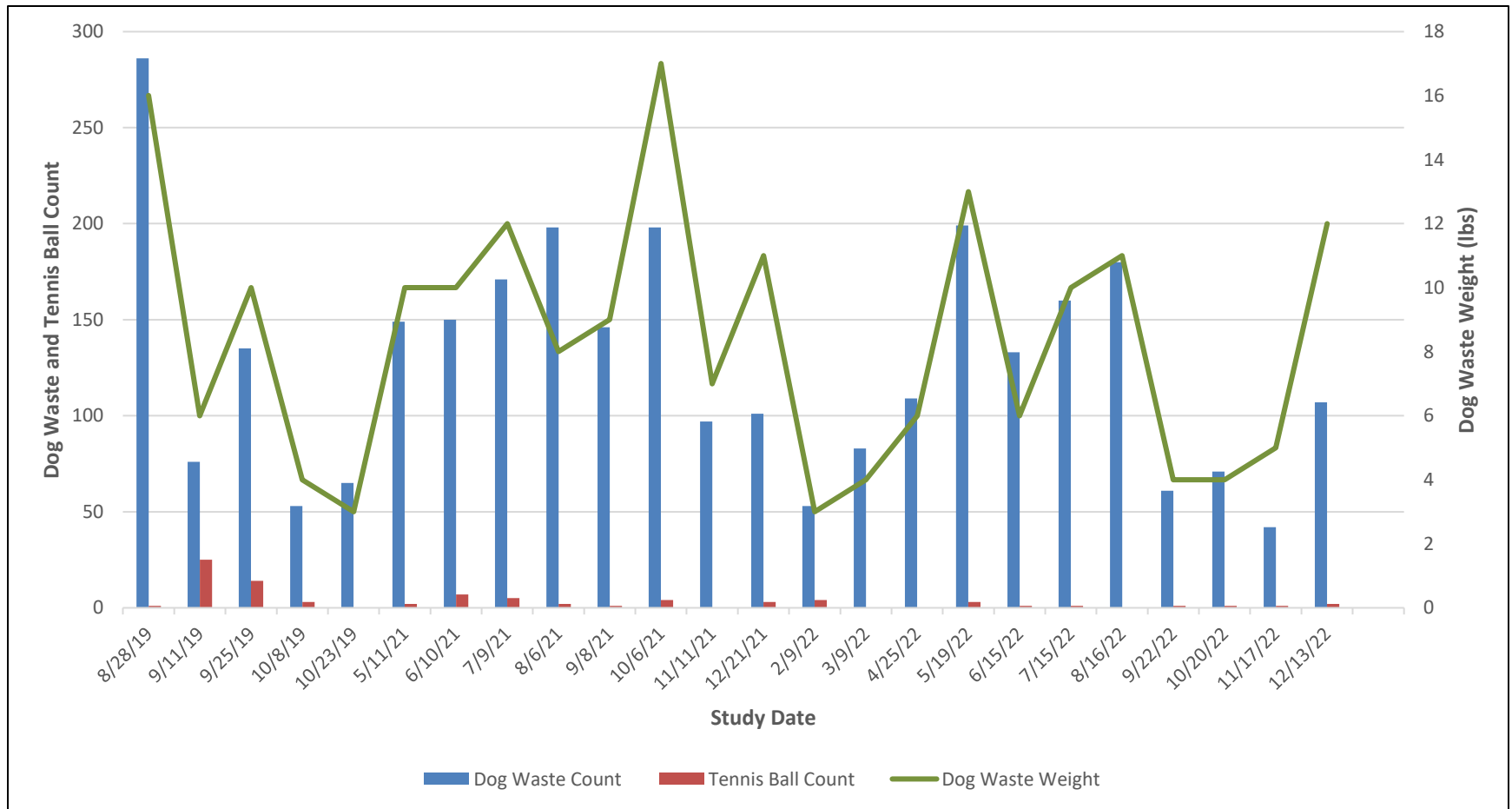
City of Carlsbad Village H Wildlife Movement Study Summary

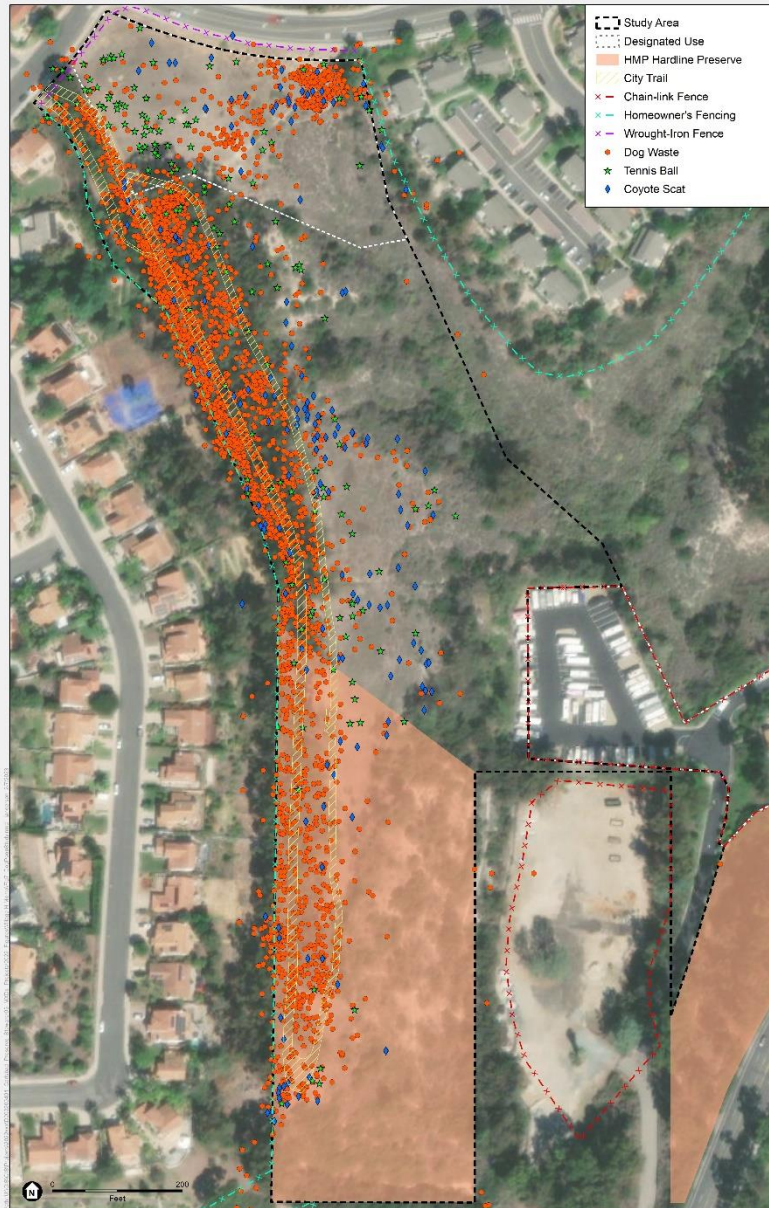
Figure 6
Updated Wildlife Movement Corridors

Roadkill monitoring



Dog waste study





SOURCE: ESR; City of Carlsbad

City of Carlsbad Village H Wildlife Movement Study Summary

Figure 7
Dog Waste Study Results

Thank you!

Report can be found on the HMP Reports & Studies webpage:

<https://www.carlsbadca.gov/departments/environmental-sustainability/habitat-protection/hmp-reports-studies>

Under the Wildlife Movement Reports section

