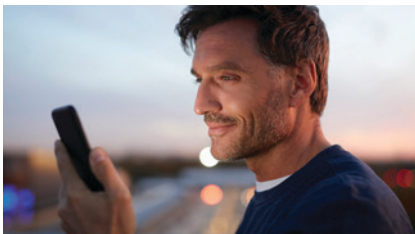


Magellan Healthcare

Mental Health and Substance Use Disorder Services

Being healthy goes beyond physical signs, such as low cholesterol levels, good cardiovascular strength, and the absence of disease. It also means having good mental health and being able to meet the demands of everyday life. Magellan Healthcare*, your health plan’s mental health services administrator, makes accessing mental health and substance use disorder services easy for you through:



Member services

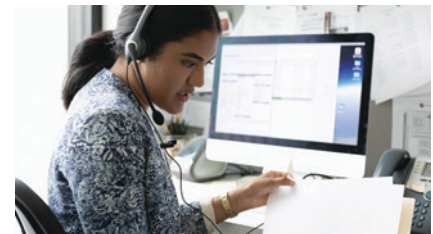
Call 24 hours a day, seven days a week if you have any questions about your Magellan Healthcare mental health or substance use disorder services. Magellan provides inpatient and outpatient services to members such as partial hospitalization, psychological testing, care management and telehealth. Member services can help you with questions about services, benefits, eligibility, finding a provider and accessing mental health and substance use disorder services, as well as filing grievances.



Network

Access a robust, leading national network of licensed mental health and substance use disorder providers:

- Psychiatrists
- Psychologists
- Professional counselors
- Marriage/family therapists
- Clinical social workers
- Alcohol/drug/addiction counselors



Care management

A care manager will help you with developing a plan to address mental health and substance use disorder concerns, managing medicine, navigating support, finding resources, closure of life domain concerns, and care coordination when eligible.

**Sharp Health Plan’s partnership with Magellan has an anticipated effective date of Jan. 1, 2024. Pending regulatory review.*



Digital Emotional Wellbeing Program

Our proven program for life, mind and body can help with anxiety, resilience, grief, stress, depression, chronic pain, pregnancy, aging and more. Complete activities to earn points, see your progress and sync to other trackers.



Hospital transition planning

Get help transitioning from the hospital to a residential treatment facility or a home setting. Support includes discharge planning, welcome home calls and follow-up to make sure you stay on the path to wellness.



Magellan Autism Connections®

Comprehensive assessments, an individual care plan, high-quality providers, care coordination and caregiver support help restore your child's function and health and reduce costs and caregiver stress.

Want to learn more about your Magellan mental health and substance use disorder benefits? Call 1-844-483-9013.