



## City of Carlsbad

### Annual Open Space Status Report for Fiscal Year 2016/2017

July 1, 2016- June 30, 2017

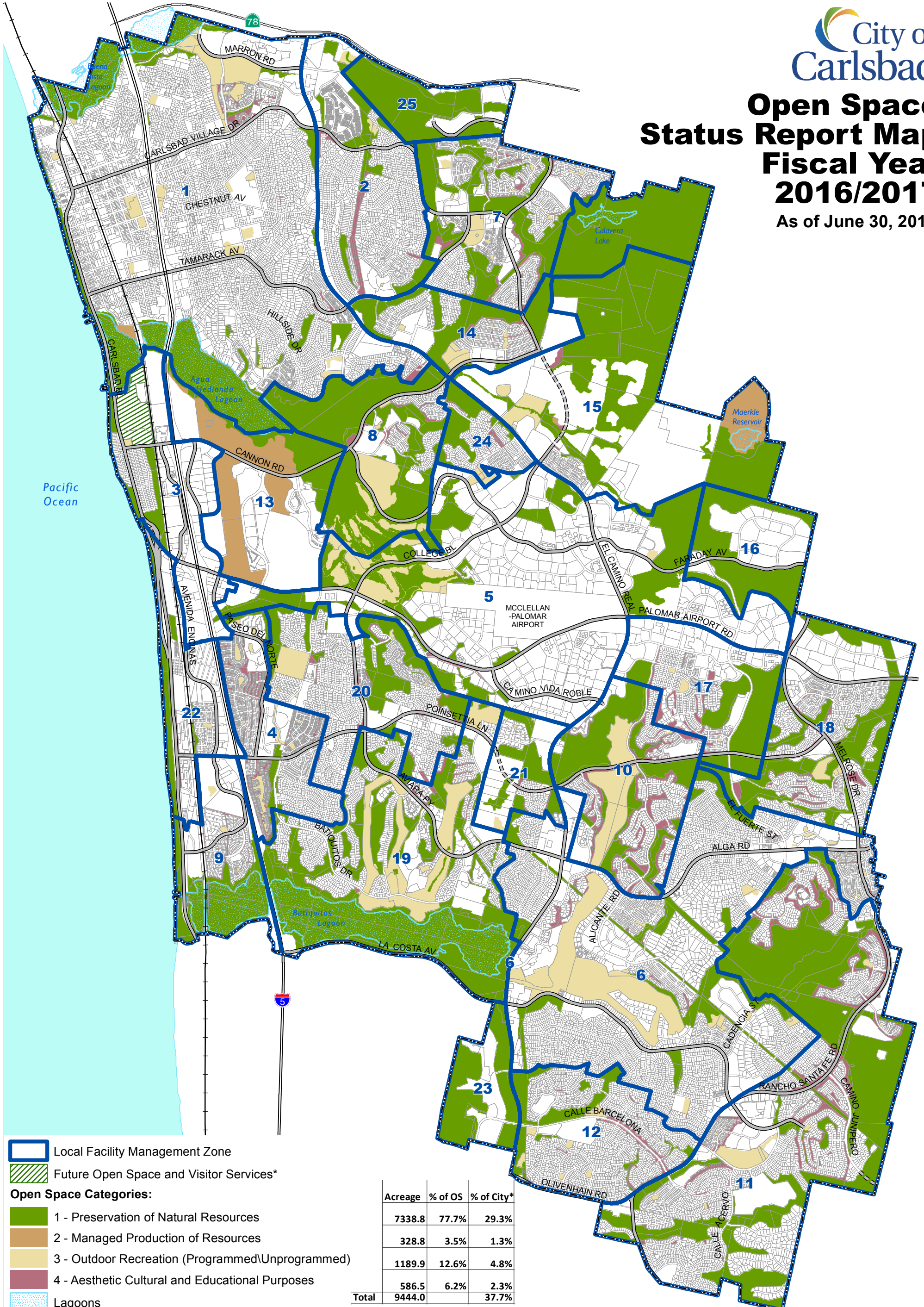
The table below shows the amount of designated open space acreage by category in each of the Local Facilities Management Zones (LFMZ). This data is current through the end of the Fiscal Year 2016/2017, ending on June 30, 2017. There were no changes to designated open space during the fiscal year reporting period.

	1	2	3	4			
LFMZ	Preservation of Natural Resources	Managed Production of Resources	Outdoor Recreation (Programmed/Unprogrammed)	Aesthetic Cultural and Educational Purposes	Total LFMZ open space	Total LFMZ acreage	Open space percentage
1	534.2	6.8	128.8	27.6	697.4	3,395.5	20.5%
2	91.9		9.5	25.8	127.2	805.4	15.8%
3	55.7		3.3	0.0	59.0	625.4	9.4%
4	32.9		25.3	44.6	102.8	507.8	20.2%
5	483.1		110.9	4.7	598.7	2,440.0	24.5%
6	228.5		280.4	18.9	527.8	2,606.9	20.2%
7	276.9		28.3	39.2	344.3	812.8	42.4%
8	486.2		94.0	13.8	594.0	743.1	79.9%
9	195.1		3.9	8.7	207.8	471.6	44.1%
10	246.8		114.2	103.2	464.2	766.8	60.5%
11	95.3		16.5	25.9	137.7	660.9	20.8%
12	919.8		41.9	142.1	1,103.8	2,290.6	48.2%
13	113.7	232.4			346.1	736.9	47.0%
14	535.0		21.1	9.0	565.0	827.5	68.3%
15	716.5	89.5	34.2	5.1	845.5	1,536.3	55.0%
16	219.7				219.7	413.7	53.1%
17	187.7		5.6	31.2	224.5	588.4	38.2%
18	299.9		14.0	30.8	344.7	899.9	38.3%
19	788.9		206.5	18.7	1,014.0	1,611.6	62.9%
20	199.6		34.6	22.7	256.9	805.1	31.9%
21	80.4		5.5	4.5	90.3	267.4	33.8%
22	69.2		1.5	3.5	74.2	431.0	17.2%
23	184.3				184.3	284.4	64.8%
24	65.3		10.0	6.6	81.9	199.6	41.0%
25	232.0		0.1		232.1	299.9	77.4%
<b>Totals</b>	<b>7338.6</b>	<b>328.8</b>	<b>1190.0</b>	<b>586.6</b>	<b>9,443.9</b>	<b>25,028.4</b>	<b>37.7%</b>



# Open Space Status Report Map Fiscal Year 2016/2017

As of June 30, 2017



- Local Facility Management Zone
- Future Open Space and Visitor Services\*

**Open Space Categories:**

- 1 - Preservation of Natural Resources
- 2 - Managed Production of Resources
- 3 - Outdoor Recreation (Programmed/Unprogrammed)
- 4 - Aesthetic Cultural and Educational Purposes

Lagoons

City Limits

Highway

Major Street

Planned Street

Railroad

	Acreage	% of OS	% of City*
1 - Preservation of Natural Resources	7338.8	77.7%	29.3%
2 - Managed Production of Resources	328.8	3.5%	1.3%
3 - Outdoor Recreation (Programmed/Unprogrammed)	1189.9	12.6%	4.8%
4 - Aesthetic Cultural and Educational Purposes	586.5	6.2%	2.3%
<b>Total</b>	<b>9444.0</b>		<b>37.7%</b>

PLEASE NOTE: Open space areas on this map are derived from the San Diego County assessor parcel map from SanGIS.org, which is the best mapping base currently available for a city-wide perspective. However, the parcel lines and the open space areas within them must be considered as approximations only, and are not to be used to establish definitive lines of ownership or land status.

THIS MAP/DATA IS PROVIDED WITHOUT WARRANTY OF ANY KIND, EITHER EXPRESS OR IMPLIED, INCLUDING BUT NOT LIMITED TO, THE IMPLIED WARRANTIES OF MERCHANTABILITY AND FITNESS FOR A PARTICULAR PURPOSE.

GIS parcel data is derived from SanGIS/SANDAG downloadable data - www.sangis.org. Copyright SanGIS 2017.

\* Future open space area is not counted in the open space acreage table on this map. For more information, see General Plan Land Use and Community Design Element, 'Special Planning Considerations: Carlsbad Boulevard/Agua Hedionda Center.'