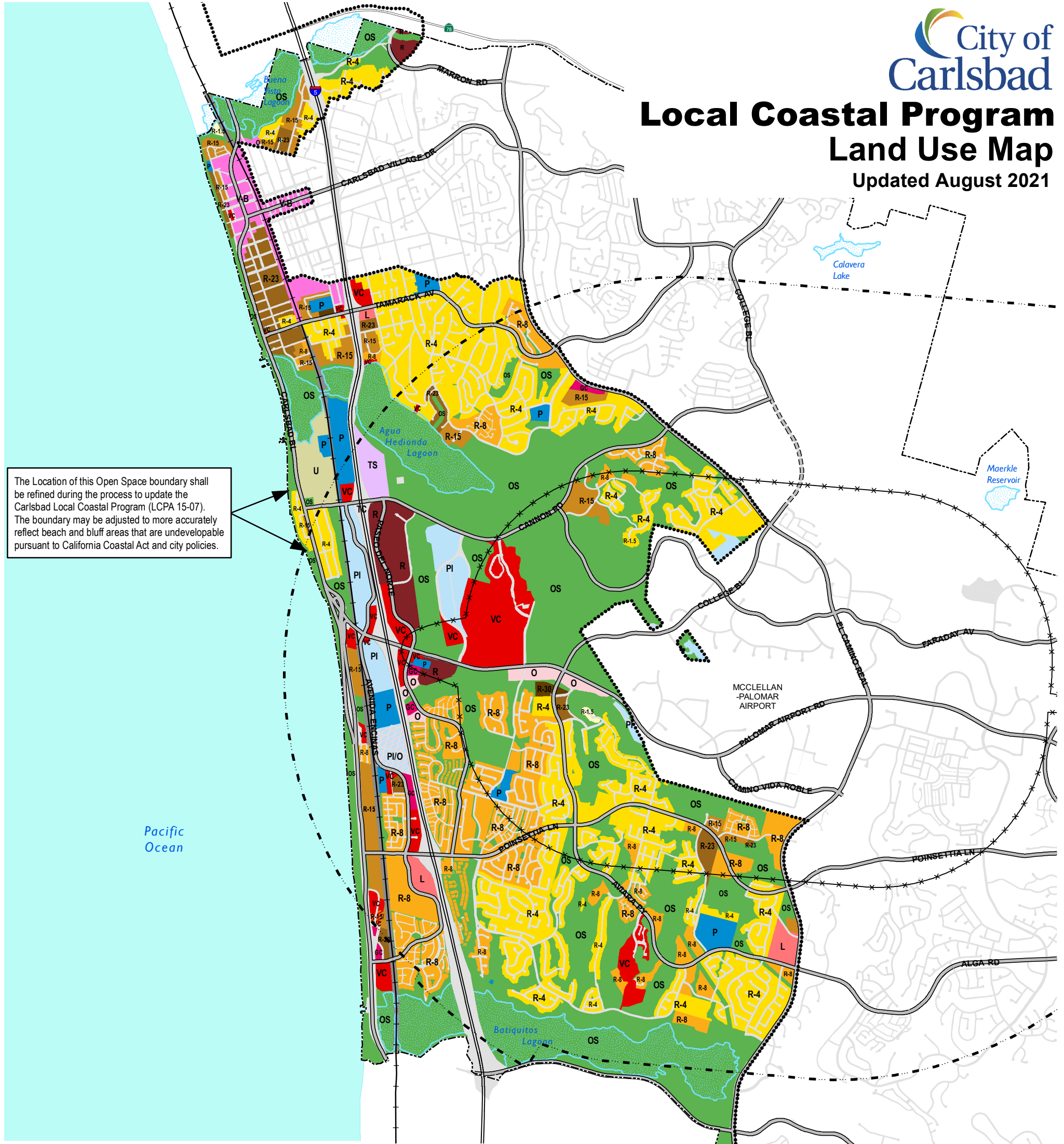


# Local Coastal Program Land Use Map

Updated August 2021

The Location of this Open Space boundary shall be refined during the process to update the Carlsbad Local Coastal Program (LCPA 15-07). The boundary may be adjusted to more accurately reflect beach and bluff areas that are undevelopable pursuant to California Coastal Act and city policies.



**Land Use:**

- R-1.5, Residential 0-1.5 du/ac
- R-4, Residential 0-4 du/ac
- R-8, Residential 4-8 du/ac
- R-15, Residential 8-15 du/ac
- R-15/VC, Residential 8-15 du/ac/Visitor Commercial
- R-23, Residential 15-23 du/ac
- R-30, Residential 23-30 du/ac
- V-B, Village-Barrio
- L, Local Shopping Center
- GC, General Commercial
- VC, Visitor Commercial
- TS, Travel Services Commercial
- R, Regional Commercial
- PI, Planned Industrial
- PI/O, Planned Industrial/Office
- O, Office
- P, Public
- U, Public Utilities
- OS, Open Space
- TC, Transportation Corridor

- Coastal Zone
- Highway
- Major Street
- Planned Street
- Railroad
- Lagoon
- Right of Way
- City Limits
- Airport Influence Area**
- Review Area 1
- Review Area 2

