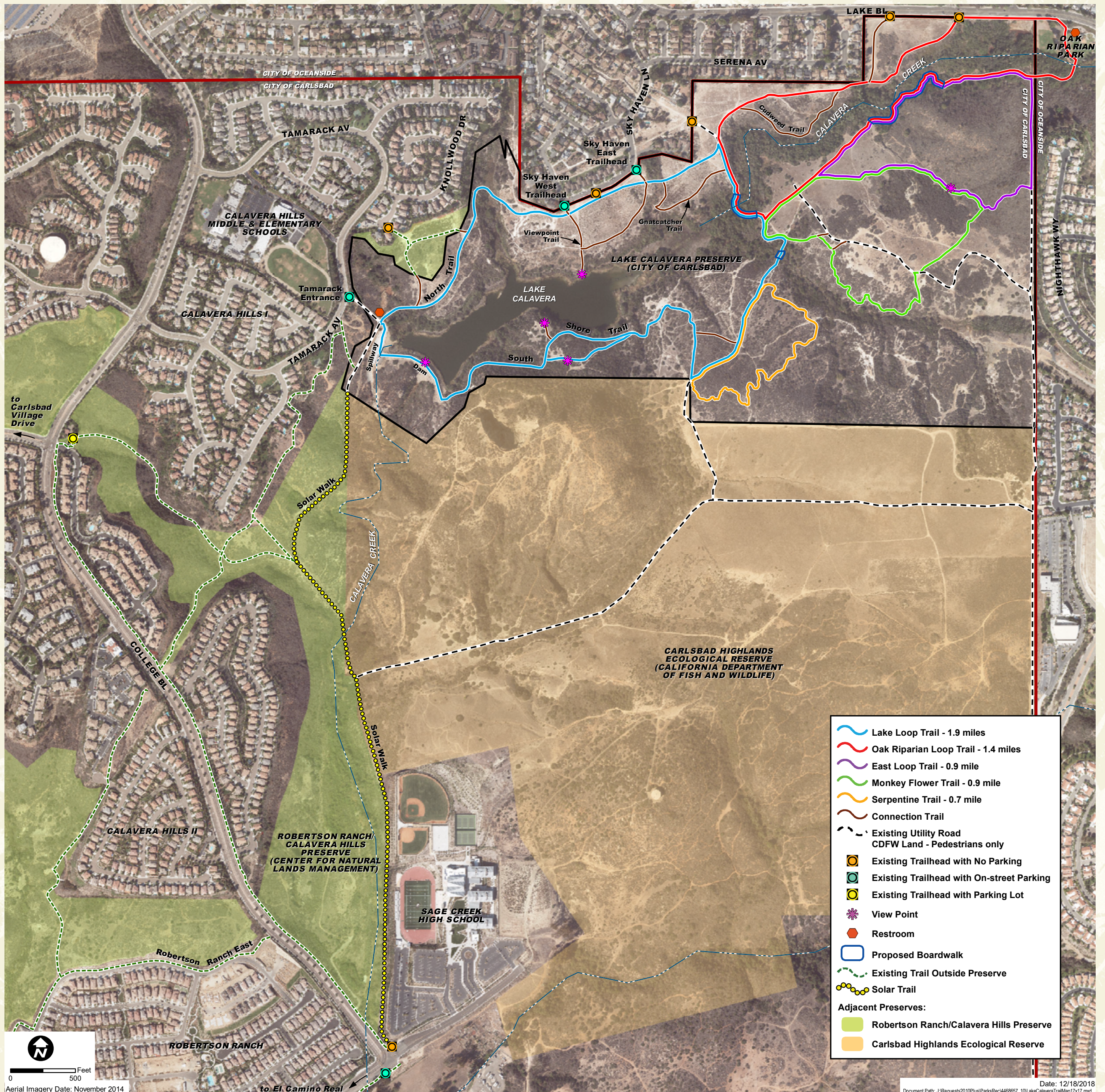
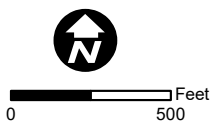


# Lake Calavera Preserve & Vicinity



- ~ Lake Loop Trail - 1.9 miles
  - ~ Oak Riparian Loop Trail - 1.4 miles
  - ~ East Loop Trail - 0.9 mile
  - ~ Monkey Flower Trail - 0.9 mile
  - ~ Serpentine Trail - 0.7 mile
  - ~ Connection Trail
  - Existing Utility Road
  - CDFW Land - Pedestrians only
  - Existing Trailhead with No Parking
  - Existing Trailhead with On-street Parking
  - Existing Trailhead with Parking Lot
  - \* View Point
  - ♦ Restroom
  - Proposed Boardwalk
  - Existing Trail Outside Preserve
  - Solar Trail
- Adjacent Preserves:**
- Robertson Ranch/Calavera Hills Preserve
  - Carlsbad Highlands Ecological Reserve



Aerial Imagery Date: November 2014

Date: 12/18/2018

Document Path: J:\Requests\2010Plus\ParksRec\468657\_10LakeCalaveraTrailMap17x17.mxd