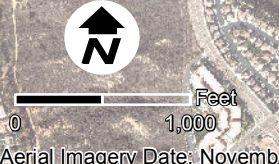
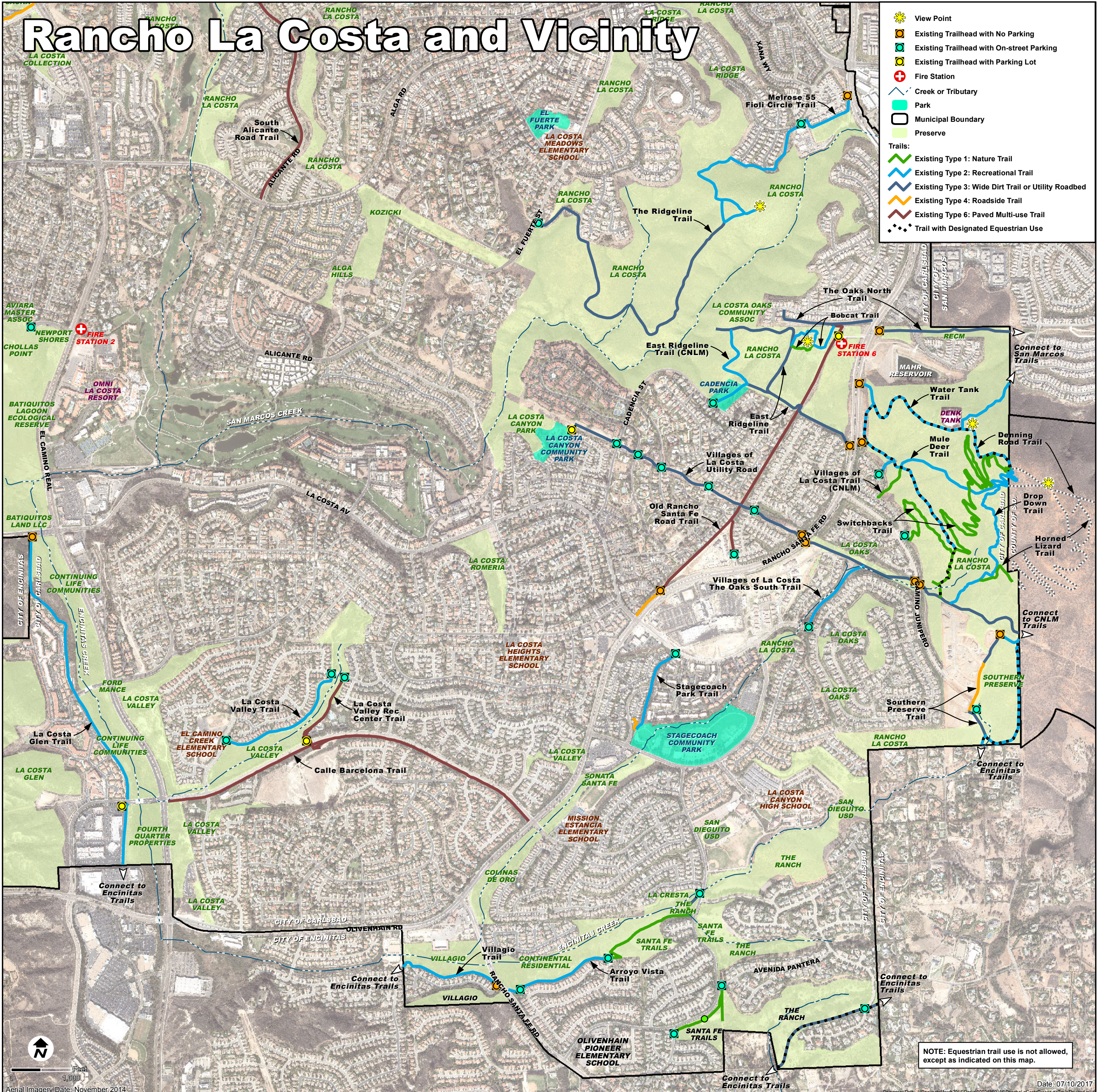


# Rancho La Costa and Vicinity

- View Point
  - Existing Trailhead with No Parking
  - Existing Trailhead with On-street Parking
  - Existing Trailhead with Parking Lot
  - Fire Station
  - Creek or Tributary
  - Park
  - Municipal Boundary
  - Preserve
- Trails:
- Existing Type 1: Nature Trail
  - Existing Type 2: Recreational Trail
  - Existing Type 3: Wide Dirt Trail or Utility Roadbed
  - Existing Type 4: Roadside Trail
  - Existing Type 6: Paved Multi-use Trail
  - Trail with Designated Equestrian Use



NOTE: Equestrian trail use is not allowed, except as indicated on this map.