

Veterans Memorial Park Community Workshop

A Day at the Park
March 9, 2019



Welcome

Thank you for coming!

Introductions

Purpose of today's meeting



Today's Topics

- High level needs, priorities, ideas
- Questions will be broad
- Goal is understanding
- Lots more opportunities to come

Today's Topics

- Not on today's agenda:
 - Park location
 - Timing
 - Other parks

Meeting Format

- Brief overview
 - Don't need to be an expert
- Discussions at tables
 - Staff here to listen, record
- Report outs to hear from the room
- Identify themes, values

Meeting Format

- No decisions made today
- Don't need to convince anyone
- Opportunity to learn what's important to you and each other
- Focus on the “why”

Code for Civic Discourse

- Promote an **inclusive** environment where diverse perspectives are shared and considered.
- Listen attentively and ask questions **to understand** other's positions.
- Show **respect** for ideas and views presented, even when we disagree.
- Explain our positions by **fairly** presenting the reasons for them.
- Avoid personal attacks or other tactics that distract **attention** from the salient issues.

National Conflict Resolution Center

After Today's Meeting

- Online input
- All input compiled, provided to project team
- Identify themes, values
- Use input to shape conceptual designs
- Future check in on community vision

Logistics

- Tour starts at noon
- Snacks, coffee and water
- Restrooms

Project Background

Project Background

- Location and make-up of the site
- Brief history of the park and city standards
- Elements of the master planning process





You Are Here

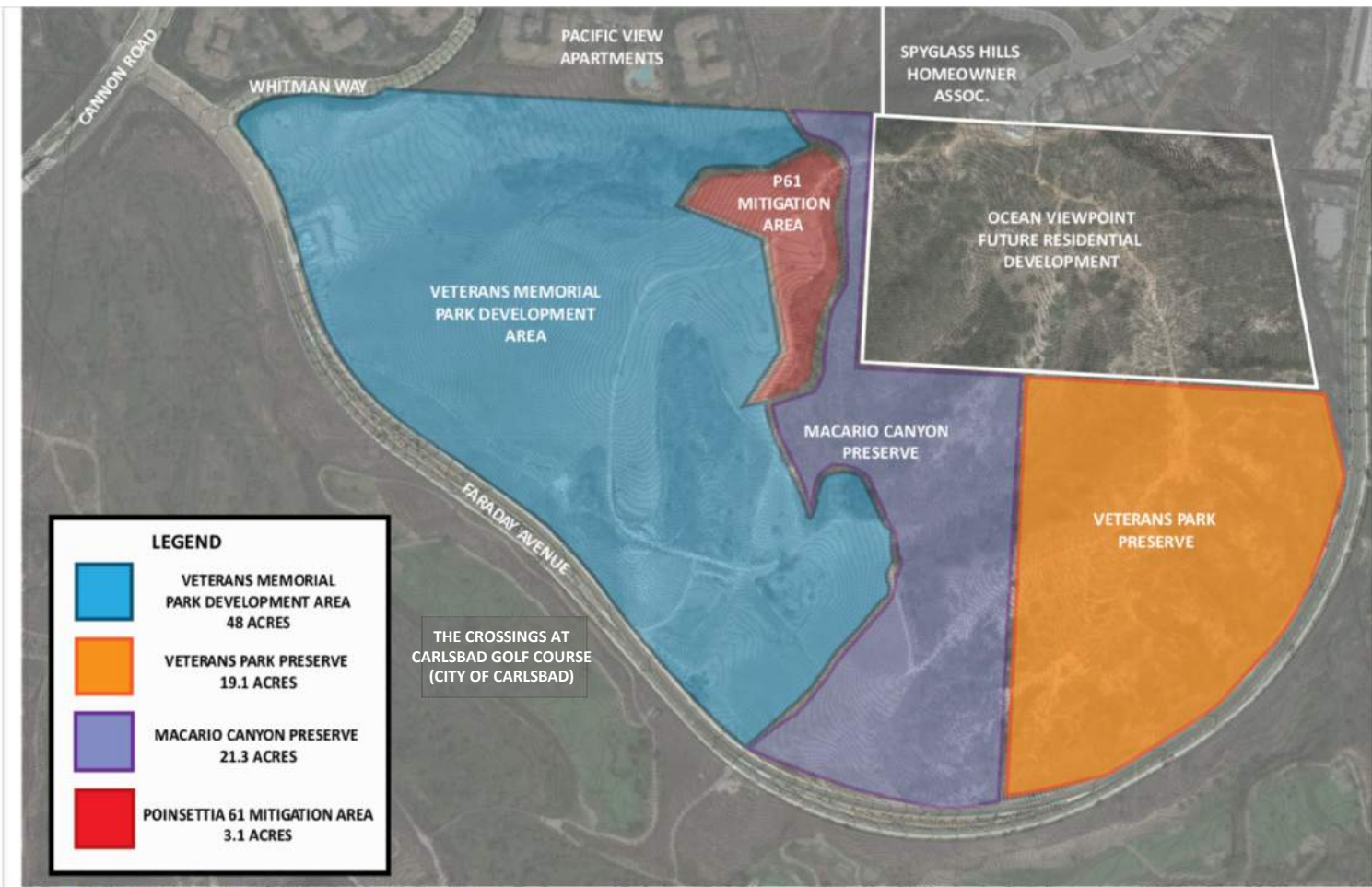
Park Site

Faraday Ave

Cannon Rd

Park Site

- 91.5 acres total
- 43.5 acres preserved
- 48 acres developable



Brief History

- In 1986, Council created performance standards through a Facilities and Improvements Plan
- Parks performance standard is three acres per 1,000 population within the four park districts
- The park districts align with the city's quadrants

Brief History

- 91.5 acre park will equally count toward the standard in all quadrants (i.e., 22.875 acres ea.)
- Park is to serve as a regional recreation source
- To ensure the standard is met/exceeded in all quadrants, park is being master planned now

Brief History

- In 1989, Council approved the park's name
- A 'community park' by General Plan definition
- Amenity types within such parks include passive and active recreation, and structures

Brief History

- In 2015, City Council adopted the Parks & Recreation Department Master Plan
- Plan details community's priority rankings for park facilities/amenities and recreation programs
- \$23M has been set aside to build the park

Master Planning Elements

- Project familiarization
- Aerial mapping and field surveying
- Environmental assessment and utilities identified
- Cultural and biological resources analysis
- Identification of opportunities and constraints

Master Planning Elements

- Three rounds of community outreach intended
- First focuses on needs, values and priorities
- Input used to help shape conceptual designs
- Conceptual designs later presented and refined

Master Planning Schedule

March – December 2019

Public input on priorities for the park, development and review of conceptual park design

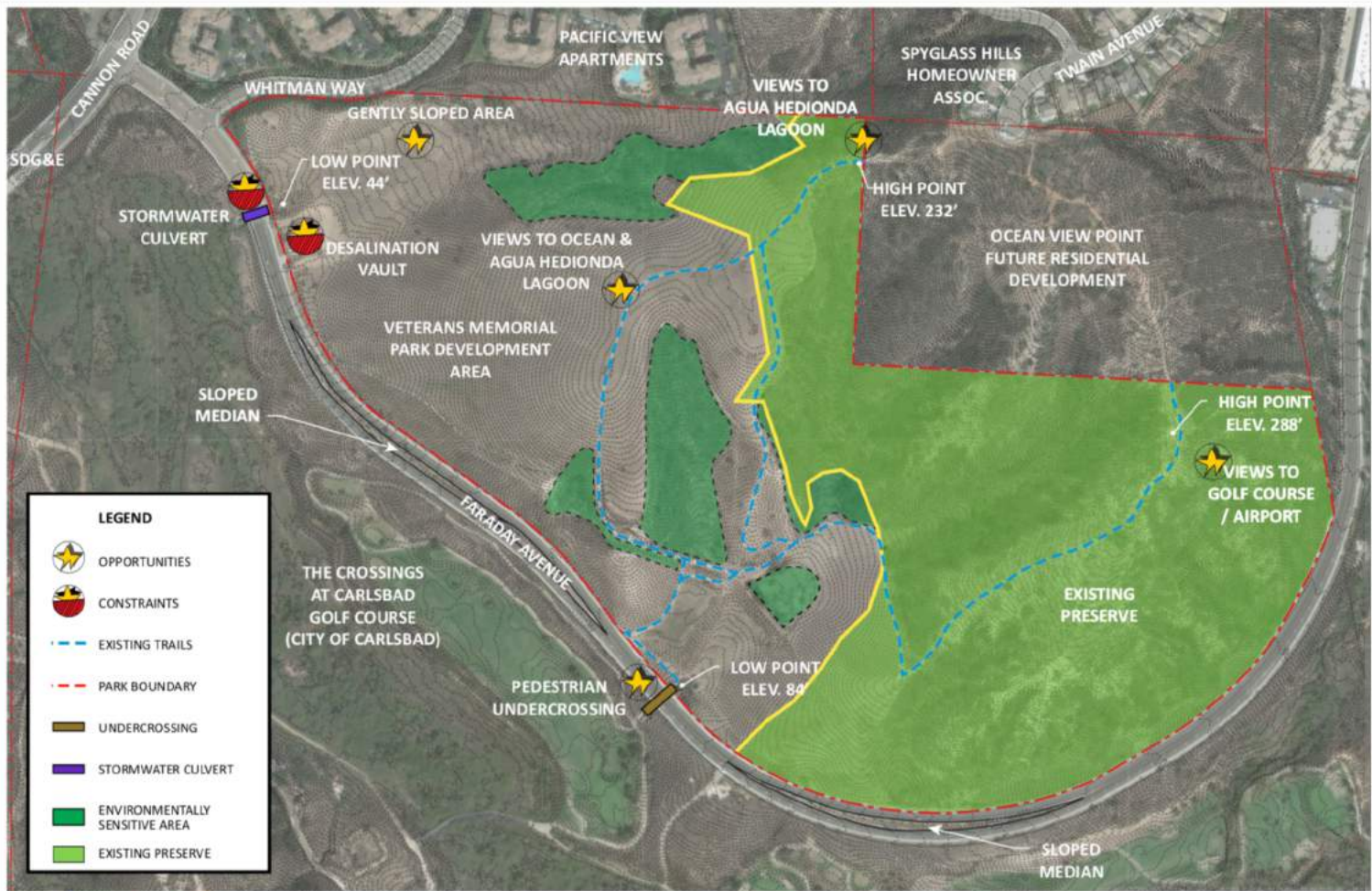
January – May 2020

Development and submittal of the Conditional Use Permit and environmental report

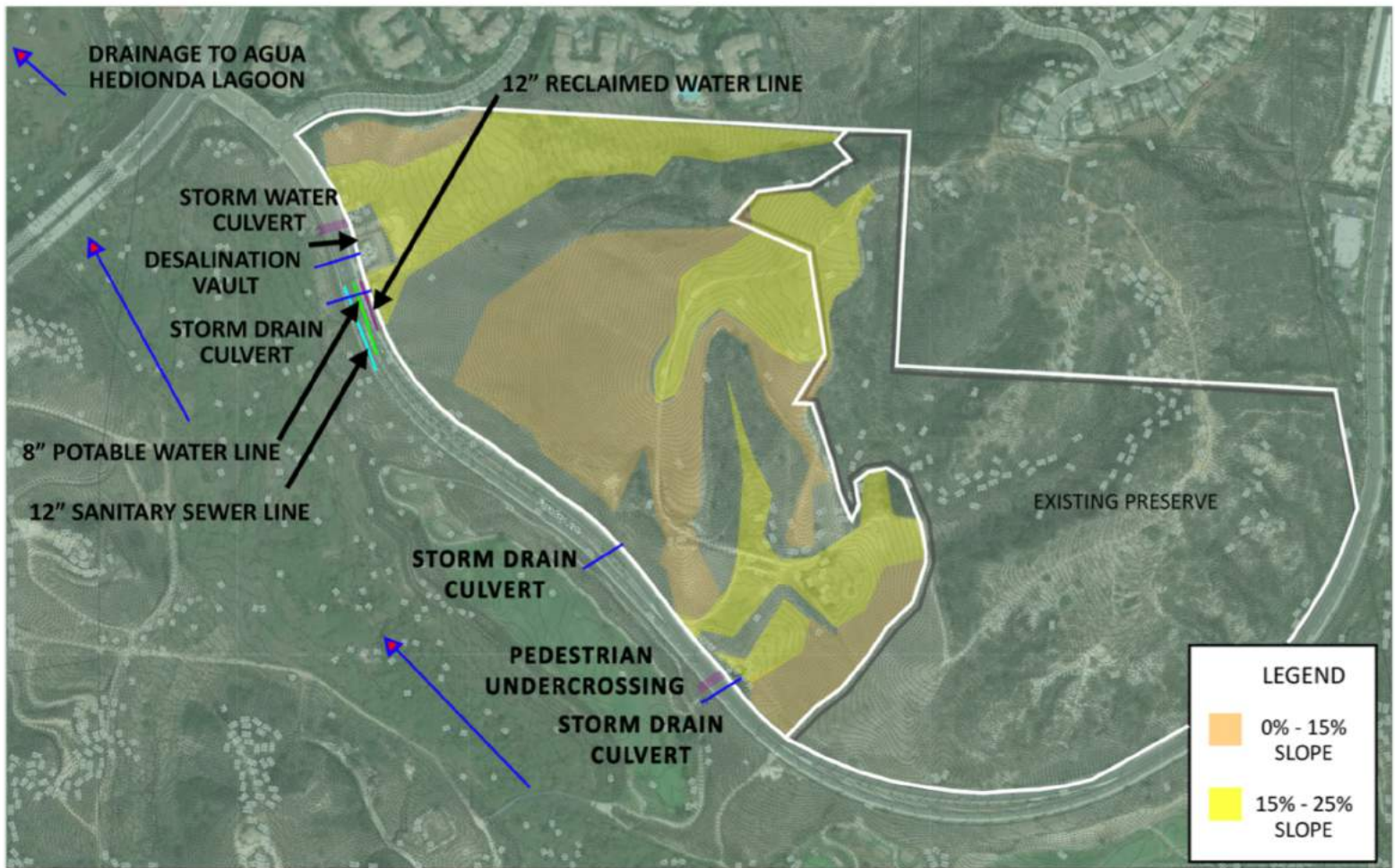
June – October 2020

Final approval of the master plan through Planning Commission and City Council

Park Site Overview



| LEGEND | |
|--------|--------------------------------|
| | OPPORTUNITIES |
| | CONSTRAINTS |
| | EXISTING TRAILS |
| | PARK BOUNDARY |
| | UNDERCROSSING |
| | STORMWATER CULVERT |
| | ENVIRONMENTALLY SENSITIVE AREA |
| | EXISTING PRESERVE |



ALL INFORMATION IS FOR INFORMATIONAL PURPOSES ONLY. THE CITY OF CARLSBAD DOES NOT WARRANT THE ACCURACY OF ANY INFORMATION. THE CITY OF CARLSBAD IS NOT RESPONSIBLE FOR ANY DAMAGE TO PERSONS OR PROPERTY.

Opportunities

- Views
 - West to Agua Hedionda Lagoon and ocean
 - South/east to golf course, canyons and airport
 - North to mountains
- Upper plateau allows for wide range of activities
- Major utilities in place along Faraday Avenue

Opportunities

- Pedestrian undercrossing to golf course trail
- Large habitat areas to be preserved in perpetuity
- Expansion of trails with varied degree of difficulty
- Proximity to golf course, discovery center and LEGOLAND

Constraints

- ADA / Reduced accessibility due to terrain
- Preserve areas / trails related amenities only
- Areas adjacent to habitat/limited development
- Steep slopes / limited recreation opportunities

Constraints

- Housing to the north; future housing to the northeast
- Limited level access to the site
- Vehicle access limited

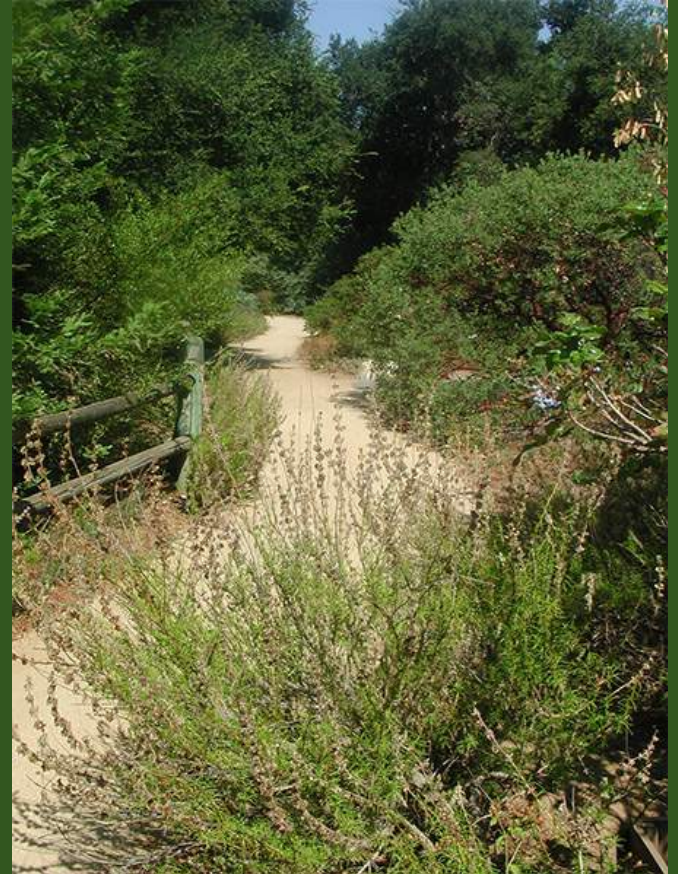
Potential Amenities

Memorial



Passive Recreation

Trails, vista points, rest areas



Passive Recreation

Open turf areas



Passive Recreation

Native garden, multi-use accessible paths



Passive Recreation

Picnic, seating areas,
shade structures



Passive Recreation

Public art, interpretive signage



Active Recreation Playgrounds, climbing walls



Active Recreation

Outdoor skills facility, pump track



Active Recreation

Outdoor fitness, exercise/parkour stations



Active Recreation

Bocce ball, Frisbee golf



Gathering Spaces

Small performance stage,
multi-use plaza



Structure /Utilities

Restrooms,
maintenance,
concession



Park Vision

Discussion #1

1. Introduce yourselves
2. What would you like to experience at this park?
3. How would you like to feel when you come to the park?

Making it Real

Discussion #2

How will you use this park?

Discussion #3

What else would you like us to consider about this park?

Report Out

- How will you use the park?
- What else would you like us to consider about this park?

Wrap Up

Wrap up

- Online survey
- Next opportunity for input
- Feedback about today's meeting
- Let's keep in touch
- Tour