

Welcome!

Habitat Management Plan (HMP)

16th Annual Meeting



March 9, 2021

10:00 AM



Agenda

- Welcome, virtual format
- 2020 HMP highlights & preserve management presentations
- Questions or comments may be submitted on chat or email
- HMP Annual Report, Triennial Monitoring Report, presentations, and meeting recording will be available on the HMP webpage:

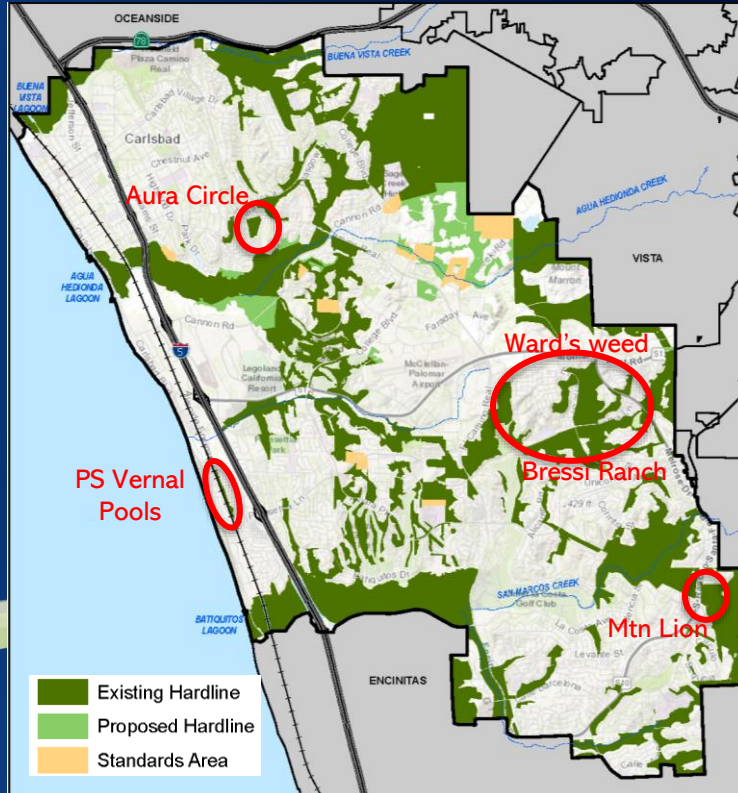
Rosanne.Humphrey@carlsbadca.gov

<https://www.carlsbadca.gov/services/depts/pw/environment/habitat/reports.asp>



Habitat Management Division

2020 Highlights



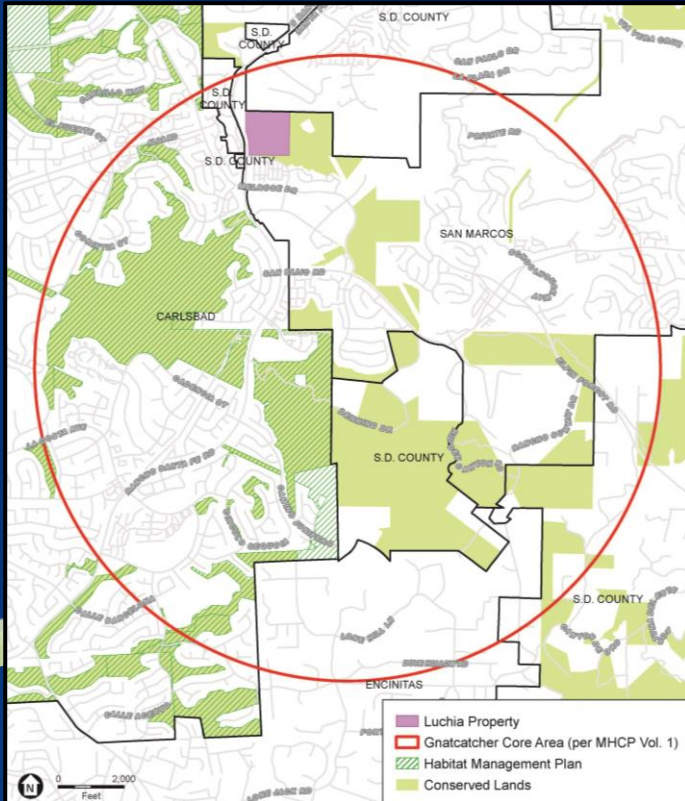
6,195 acres total
= 96% target



Habitat Management Division

2020 Highlights

Purchased 12.9 acres of Gnatcatcher
Core Area Credit
= 100% requirement (307.6 ac)



Habitat Management Division

2020 Highlights



Purchased 15.1-acre
Aura Circle Property



Habitat Management Division

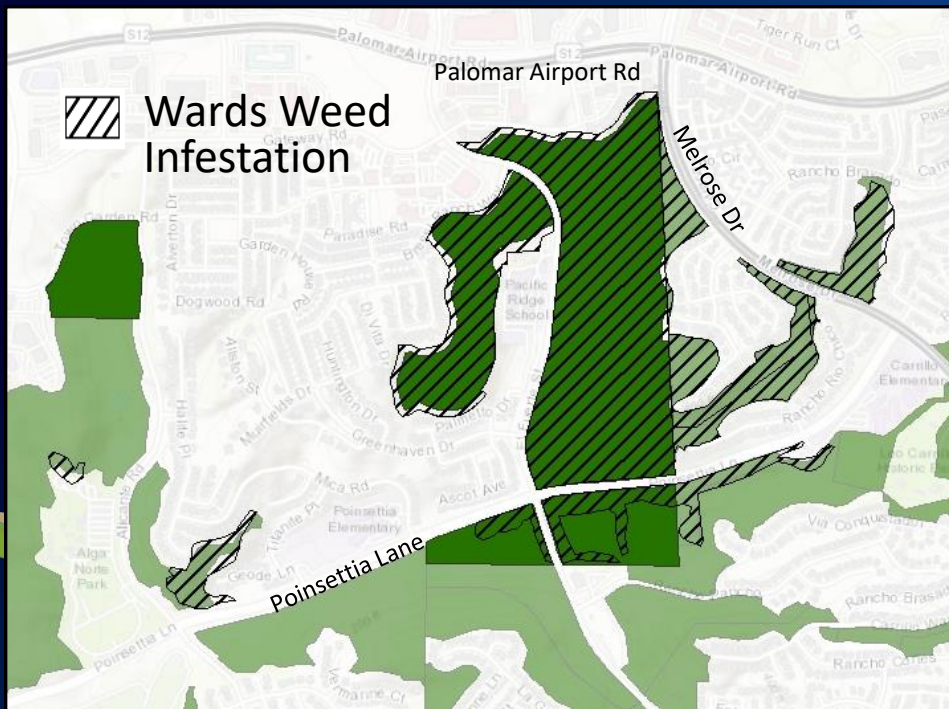
2020 Highlights

Phase 1 of Ward's Weed Eradication Program Complete

Phase 2 = surveillance and maintenance

Partners: Jason Giessow, County of San Diego, Nature Collective, Center for Natural Lands Management

-  Bressi Ranch Preserve
-  HMP Preserve System

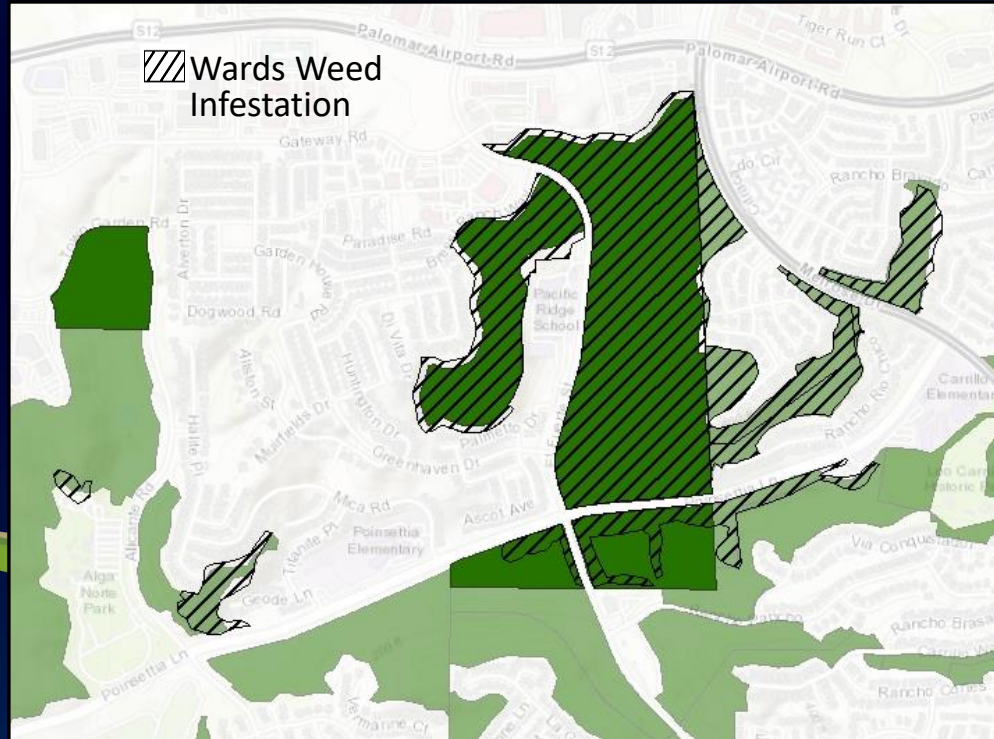


Habitat Management Division

2020 Highlights

173-acre Bressi Ranch
under long-term
management by San Diego
Habitat Conservancy

-  Bressi Ranch Preserve
-  HMP Preserve System



Habitat Management Division

2020 Highlights



Vernal Pool Species Coverage

- San Diego and Riverside Fairy Shrimp
- San Diego Button Celery
- California Orcutt Grass
- Spreading Navarretia
- Little Mousetail



Habitat Management Division

2020 Highlights

New Species Observation in Carlsbad

- Prairie false oat (*Sphenopholis interrupta* subsp. *californica*)
- Thought to have been extinct
- Previously only known from Baja California, Mexico
- Found by Jessie Vinje and Margie Mulligan
- Found on clay soils near San Diego thornmint

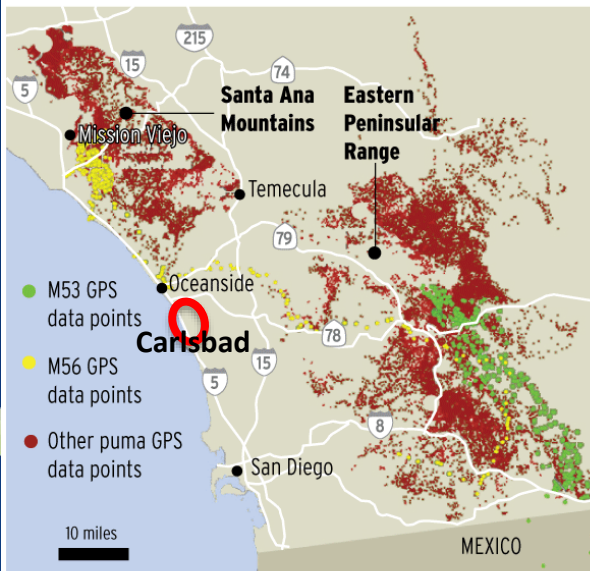


Habitat Management Division

2020 Highlights

Tracking pumas

From 2001 to 2013, scientists used GPS radio collars to track the pumas' movements in the Santa Ana Mountains and Eastern Peninsular Range in Orange and San Diego counties. Only one puma, M56, crossed between the mountains. Another, M53, moved out of the study area and into Mexico. The rest were hemmed in by highways and housing developments.



Source: UC Davis

STAFF GRAPHIC

Mountain Lion Observation

- Most mountain lions are N of HWY 76 and E of I-15
- Documented November 2020 on Rancho La Costa Preserve by CNLM and nearby resident



Resident video

Thank you!

- HMP Annual Report, Triennial Monitoring Report, presentations, and meeting recording will be available on the HMP webpage:

Questions/comments may be submitted to:
Rosanne.Humphrey@carlsbadca.gov

<https://www.carlsbadca.gov/services/depts/pw/environment/habitat/reports.asp>

